

Media Profile Installation Guide for Roland VersaWorks®

Instructional Bulletin #6.70 (Revision 1)

Dated: 12/31/14

1.0 Scope

The procedure for installing Avery Dennison Graphics media profiles once they have been downloaded from the Avery Dennison Graphics Profile Download Wizard. <http://avery-us.color-base.com/>

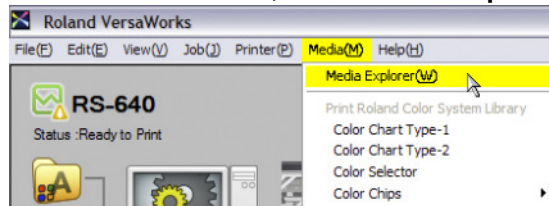
2.0 Downloading

Extract the Avery Dennison Roland VersaWorks media profile (ex:profile_name.rml) from the downloaded ZIP file to a convenient temporary location on the computer.

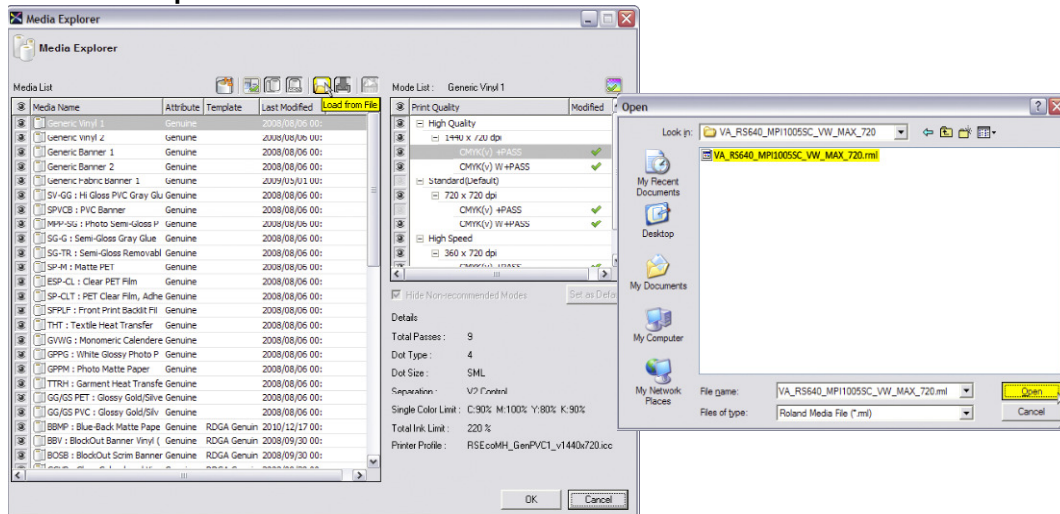
NOTE: After successful installation, the downloaded files can be deleted, or save them for backup.

3.0 Installing

1. In Roland VersaWorks, launch **Media Explorer** (menu bar > Media > Media Explorer).

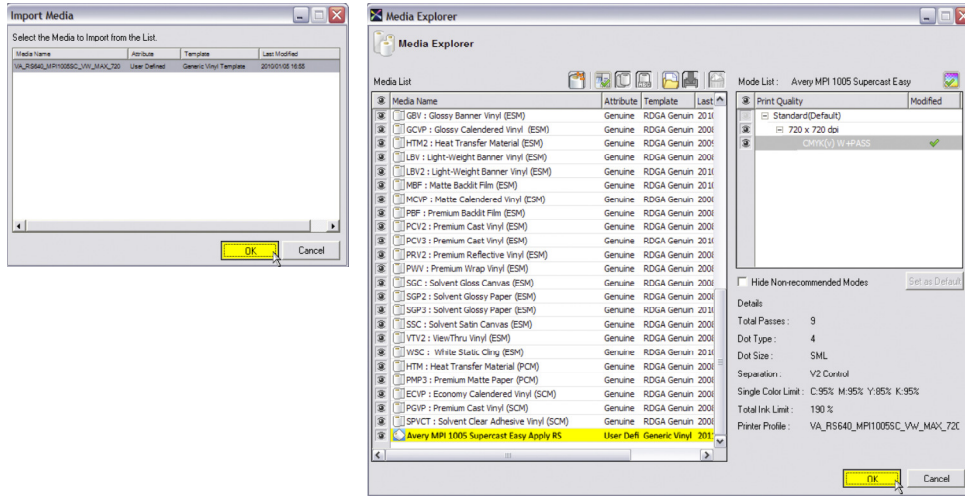


2. Click the **Load From File** folder icon. Browse to the media profile extracted in Step 1, select it and **Open**.

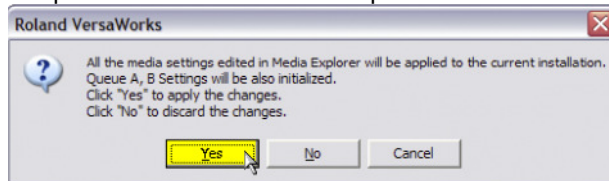


3. Click **OK** in the Import Media dialog. The Avery Dennison media profile will now appear in the Media Explorer Media List. Click **OK** to exit Media Explorer and return to the Roland VersaWorks main window.

Section 6 – Special Product Information Instructional Bulletin



4. A verification dialog will appear asking you to apply the changes. Choose **Yes** to complete the installation of the profile.



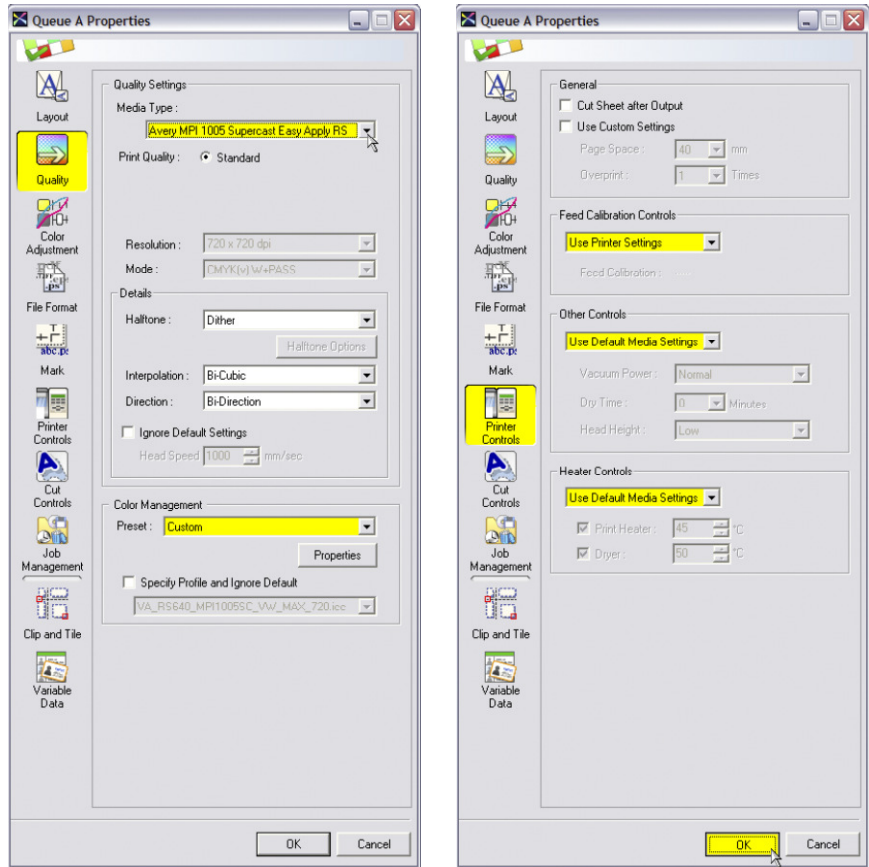
4.0 Applying

1. To apply the profile, select **Edit > Queue (A or B) Settings**. Choose the Queue that will be used when printing to this media.
2. In the Queue Properties dialog, select the **Quality** tab. In the Media Type pull-down menu, choose the Avery Dennison media that was just imported.
3. Under the **Printer Controls** tab, now choose the following options and click OK to complete the setup:
 - Feed Calibration Controls: Use Printer Settings
 - Other Controls: Use Default Media Settings
 - Heater Controls: Use Default Media Settings

NOTE: Newly added jobs will automatically have this media profile and the recommended settings applied after the Queue has been set up. Existing jobs will need their settings changed to those above and reprocessed for this profile to apply.

Section 6 – Special Product Information Instructional Bulletin

NOTE: The Color Management settings at the bottom of this window will have an effect on output, and may vary depending on printing requirements. For guidance on working with these settings, consult the Roland VersaWorks help file, or contact Avery Dennison Technical Support for further information.



5.0 Additional Notes

- **RIP Version Compatibility** - To ensure the version of the RIP software will be compatible with the media profile that is being installed, the following is recommended:
 - Note the version of VersaWorks listed when downloading the profile (example: Roland VersaWorks 4.3.0). This is considered the minimum version necessary for reliable compatibility.
 - Check the version of installed software under **Help > About Roland VersaWorks** in the main menu. If the installed version is lower than the minimum required, an automatic update can be completed by either turning it on under **File > Preferences > Roland@NET** and enabling **Check for Updates Automatically and Notify**, or update immediately by going to the Windows **Start** menu under **Programs > Roland VersaWorks > Online Update** before installing the profile.
 - To download a full installer of the latest version of VersaWorks, visit <http://download.rolanddg.jp/en/agreement.html> and choose the appropriate printer from the menu to access the file.

Section 6 – Special Product Information Instructional Bulletin

- **Printer Firmware** - Many RIP updates also require the printer firmware to be updated for compatibility. It is recommended to keep the printer firmware updated to the latest version. Check and update your firmware by doing the following:
 - To check the firmware version, go to **Printer > Printer Status (or Printer Settings)** in the main menu. This can also be accessed on the front panel of the printer under **Menu > System Info > Firmware** on most units.
 - To download the latest update for your printer, visit <http://download.rolanddg.jp/en/agreement.html> and choose the printer from the menu.
- **Ink Configuration & Model Compatibility** - Roland VersaWorks checks the profile during install for compatibility with the active printer. Since many Roland units come in a number of different ink configurations (ex: CMYK, CMYK1c1m, etc.), an error message will be received if the profile being installed does not match the active unit in the software. If this error is received, verify that the correct profile for the current **Printer, Ink Configuration, and Ink Type** has been selected. If the profile must be re-downloaded, please visit the **Printer Profile Download Wizard** at: http://avery-us.color-base.com/add_system.php.
- **Feed Adjustment and Alignment Settings** - The media profiles do not contain feed adjustment settings. It is recommended to set this manually on the front panel of the printer under **Menu > Calibration** (*on most units) when loading a new roll of media and additionally as needed.

It is also recommended checking and performing the printer's Bi-Directional alignments in both **Simple & Detail** modes, which can be found on the front panel of your printer under **Menu > Adjust Bi-Dir** (*on most units).

Correct feed adjustment will help minimize or eliminate associated horizontal banding, and correct bi-directional alignment will improve dot placement for a crisper, less "grainy" look.
- **Default Profile Settings** - The media profiles have been provided with default settings that have been found optimal for printing with Avery Dennison media. It is generally recommended that the pre-determined print speed, ink limit information, etc., not be changed as doing so may introduce ink drying, color or other printing issues. To address the unique characteristics of a specific printer and printing environment, heater settings may be adjusted incrementally as necessary, and re-linearization is recommended if possible.
- The information contained herein is believed to be reliable but Avery Dennison makes no representations concerning the accuracy or correctness of the data. This product, like any other should be tested by the customer/user thoroughly under end user conditions to ensure the product meets the particular requirements. Independent results may vary.

Avery Dennison® and the logo are registered trademarks of Avery Dennison Corp.
Revisions have been italicized.

Roland VersaWorks® is a registered trademark of Roland DG Corp.

Other third party trademarks and trade names may be used herein and are the property of their respective owners.

©2011 Avery Dennison Corporation. All Rights Reserved.

Section 6 – Special Product Information Instructional Bulletin

Page 4 of 4



Graphics
 Solutions

www.graphics.averydennison.com
 Customer Service: 800-282-8379